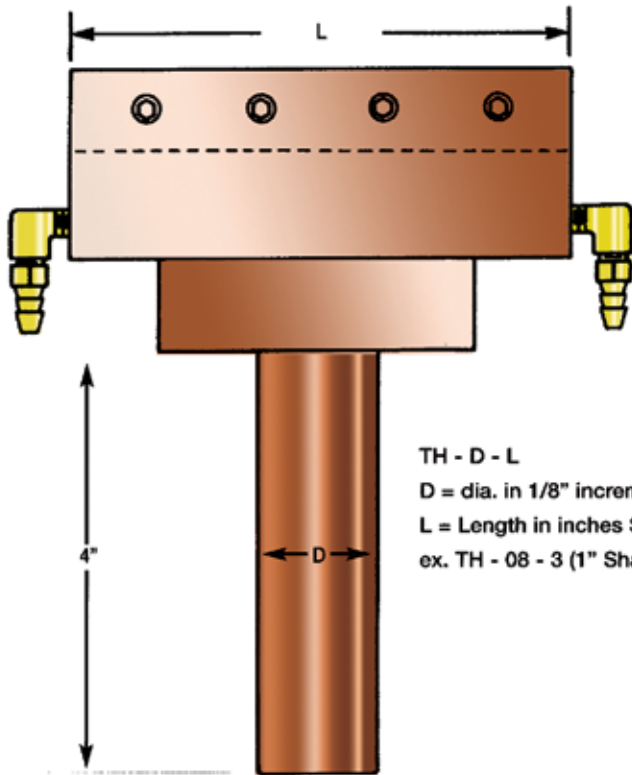




## WATER COOLED TEE HOLDER

HOLDS BAR FOR CROSS-WIRE OR PROJECTION WELDING  
CAN BE MADE TO SUIT PARTICULAR MACHINE OR JOB.



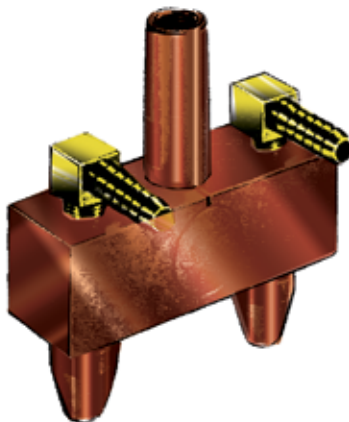
TH - D - L  
D = dia. in 1/8" increments  
L = Length in inches STD 3" or 6"  
ex. TH - 08 - 3 (1" Shank, L = 3")

## DA 300 COMPACT DUAL ADAPTER

- WATER COOLED WITH NO HOSE CONNECTIONS
- FITS A STANDARD WATER COOLED ELECTRODE HOLDER WITH #5 RWMA TAPER
- 1" TIP SPACING
- EQUILIZED TIP PRESSURE

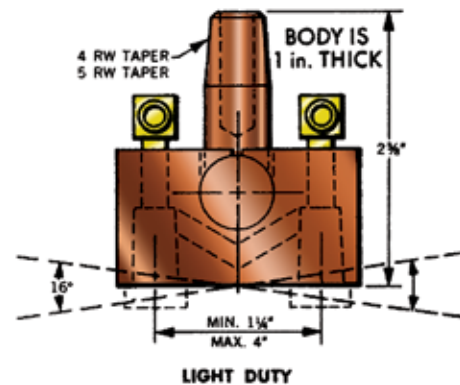


## DUAL ELECTRODE HOLDER

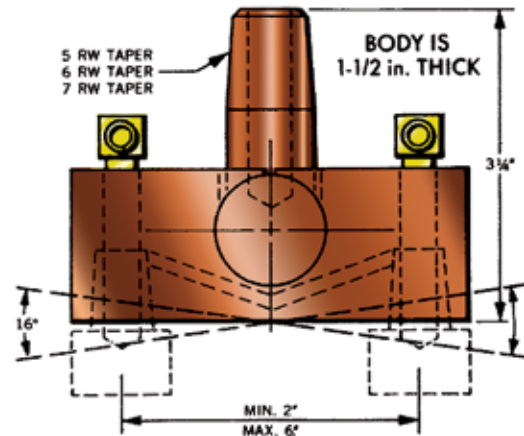


THIS EQUAL PRESSURE ADAPTOR PIVOTS TO BALANCE LOAD ON TWO ELECTRODES. IT PROVIDES UNIFORM WELD NUGGETS WHEN WELDING TWO SPOTS WITH ONE HOLDER. THE UNIT IS WATER COOLED AND CAN BE MADE TO TAKE STANDARD CAPS OR RWMA ELECTRODES.

SPACING BETWEEN ELECTRODES IS MADE TO ORDER WITHIN LIMITS ILLUSTRATED.



LIGHT DUTY



HEAVY DUTY

Style	Shank Taper	Description*	Tip Spacing Range Inches	Socket Taper		
LIGHT Duty	4RW	DA-1408	1-1/4 to 2	4RW	4CT	5CT
	4RW	DA-1416	2 to 4	4RW	4CT	5CT
	5RW	DA-1508	1-1/2 to 2	4RW	4CT	5CT
	5RW	DA-1516	2 to 4	4RW	4CT	5CT
HEAVY Duty	5RW	DA-2516	2 to 4	4RW	5RW	4CT 5CT
	5RW	DA-2524	4 to 6	4RW	5RW	4CT 5CT
	6RW	DA-2616	2 to 4	4RW	5RW	4CT 5CT
	6RW	DA-2624	2 to 6	4RW	5RW	4CT 5CT
	7RW	DA-2716	2 to 4	4RW	5RW	4CT 5CT
	7RW	DA-2724	2 to 6	4RW	5RW	4CT 5CT

\* When ordering, also state exact tip spacing and tip socket size.  
Example: DA-1508 - 1-1/2 - 5CT. (5CT means 5/8" diameter cap, 4CT means 1/2" diameter cap.)